

6 FT. CORD SET
 PACKARD ELEC. CONNECTOR
 #2973781 (FEMALE)

COOK MFG. CORP



MODEL 7247 HYDRAULIC LINEAR ACTUATOR

- Motor type : Permanent Magnet 12VDC
- Reservoir capacity: 22.5 cu. in.
- RECOMMENDED REPLACEMENT FLUID:
3EP ISO 100 or equiv.
- Weight with fluid : 24.5 lbs.
- Body : 6061-T6 aluminum alloy
- Ram : 304 stainless steel
- Fasteners : 18-8 stainless steel
- Stroke length : 10 inches
- Push (extend) force : 5000 lbs. min.
- Pull (retract) force : 3750 lbs. min.

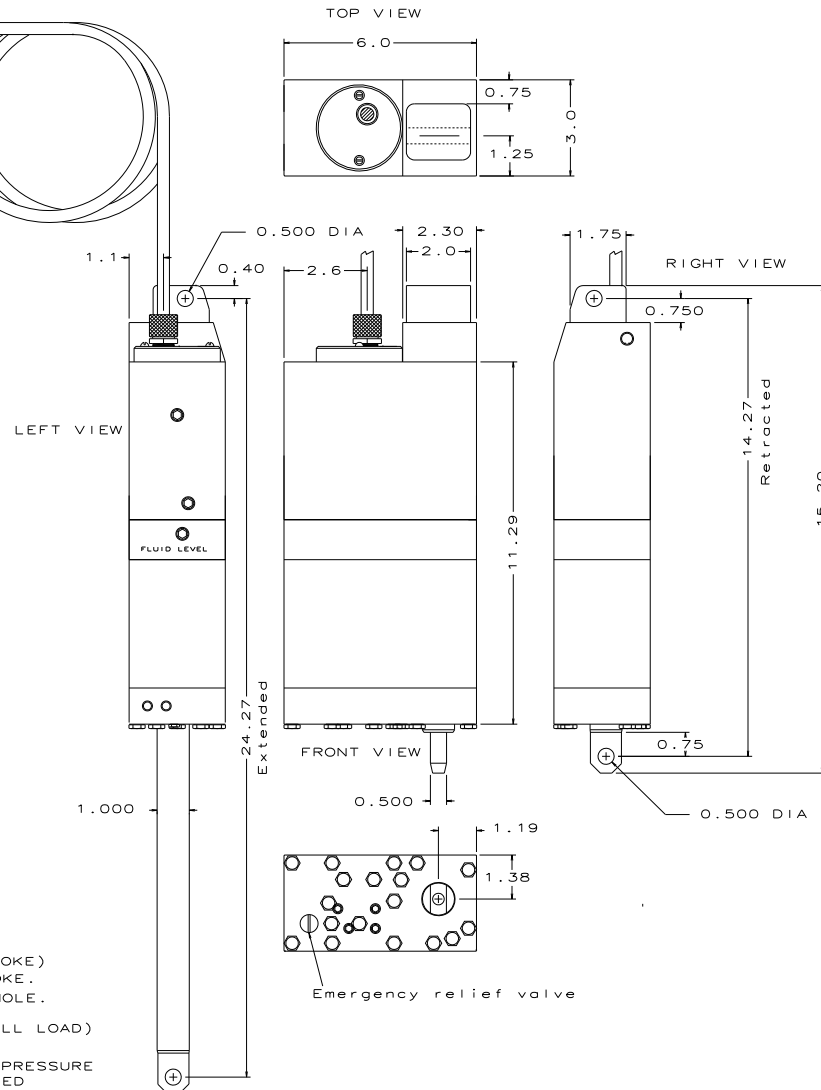
Stroke Speed: Extend 21 IPM
 Retract 28 IPM
 Operating pressure relieved at
 2500-3000 PSI

MIN. THRUST TEST PARAMETERS
 TEST RAM = 2.0" BORE /W 1.125" ROD
 EXTEND 1500 PSI
 RETRACT 1645 PSI

MIN. SPEED TEST PARAMETERS
 TEST RAM = 2.0" BORE /W 1.125" ROD
 EXTEND 250 PSI (800#) <24 SEC.
 RETRACT 250 PSI (550#) <20 SEC.

FLUID FILL PROCEDURE:

1. WITH ACTUATOR IN UPRIGHT POSITION(ROD DOWN)REMOVE FLUID FILL AND FLUID LEVEL FLUSH PLUGS.
2. ADD FLUID TO FLUID LEVEL.
3. RUN UNIT TO EXTEND ROD ADDING FLUID AS NEEDED TO COMPLETE ROD EXTENTION. (MOTOR WILL LOAD AT END OF STROKE)
4. RUN UNIT TO RETRACT ROD TO EXTEND APPROX. 2.5" OF STROKE.
5. AT THIS POINT FLUID SHOULD BE VISIBLE AT FLUID LEVEL HOLE. IF IT IS NOT ADD FLUID UNTIL FLUID IS VISIBLE.
6. RUN UNIT TO EXTEND ROD TO FULL STROKE AGAIN. (MOTOR WILL LOAD)
7. REPLACE FLUID FILL AND FLUID LEVEL FLUSH PLUGS.
8. TO CHECK FOR PROPER OPERATING CONDITION THE RESERVOIR PRESSURE SHOULD NOW MEASURE 50-75 P.S.I. WITH ROD FULLY RETRACTED



REFERENCE DRAWING #7247

			ARTICLES MANUFACTURED IN ACCORDANCE WITH THESE DRAWINGS SHALL BE CONSIDERED GMC'S DESIGN AND MANUFACTURER AGREES NOT TO MANUFACTURE FOR USE OR SALE BY ANY OTHER PERSON OR CONCERN OR MANUFACTURERS USE OR SALE IDENTICAL ARTICLES OR PARTS THEREOF WITHOUT GMC'S WRITTEN PERMISSION			7248			QUAN. REQ'D 1			DESCRIPTION-STOCK		
			NEXT ASSEMBLY			SUPERSEDES			UNLESS OTHERWISE SPECIFIED			APPROVED		
CHG. DESCRIPTION CH. BY DATE			HEAT TREAT			PROTECTIVE FINISH			1. REMOVE ALL BURRS AND SHARP CORNERS			CHECKED		
									2. COR. RADI1 .03			DESIGNED G.D.C.		
									3. DO NOT SCALE DRAWING			05-07-02		
									4. ALL DIMENSIONS ARE IN INCHES			DRAWN G.D.C.		
									5. MACHINE FINISH 200/			05-07-02		
									6. FABRICATION TOLERANCES			7. MACHINE		
									.X ± 1.0			.X ± .030		
									.XX ± .5			.XX ± .015		
									.XXX ± .25			.XXX ± .005		
									ANGLES ± 3°			ANGLES ± 4°		
									CONCENTRICITY WITHIN .010 TYP			CONCENTRICITY WITHIN .010 TYP		
									SCALE			SHEET 1 OF 1		
									CHG.			7248		